


Table of Contents

Page	View	Variant
2	Vertical Section	VS Sill
3	Vertical Section	VS HP Sill
4	Vertical Section	No Sill
5	Horizontal Section	-

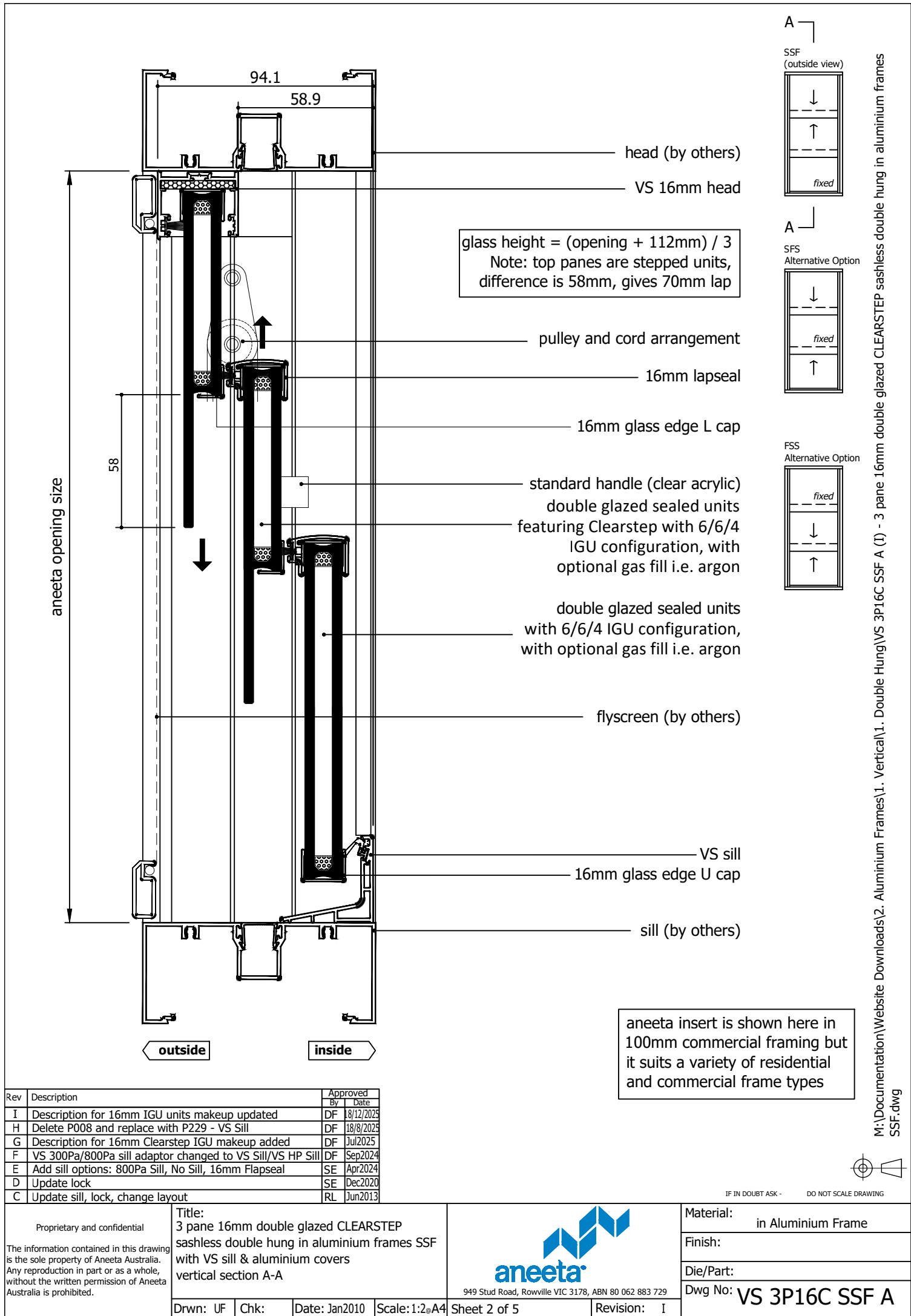
Rev	Description	Approved By	Date
I	Description for 16mm IGU units makeup updated	DF	18/12/2025
H	Delete P008 and replace with P229 - VS Sill	DF	18/8/2025
G	Description for 16mm Clearstep IGU makeup added	DF	Jul2025
F	VS 300Pa/800Pa sill adaptor changed to VS Sill/VS HP Sill	DF	Sep2024
E	Add sill options: 800Pa Sill, No Sill, 16mm Flapseal	SE	Apr2024
D	Update lock	SE	Dec2020
C	Update sill, lock, change layout	RL	Jun2013

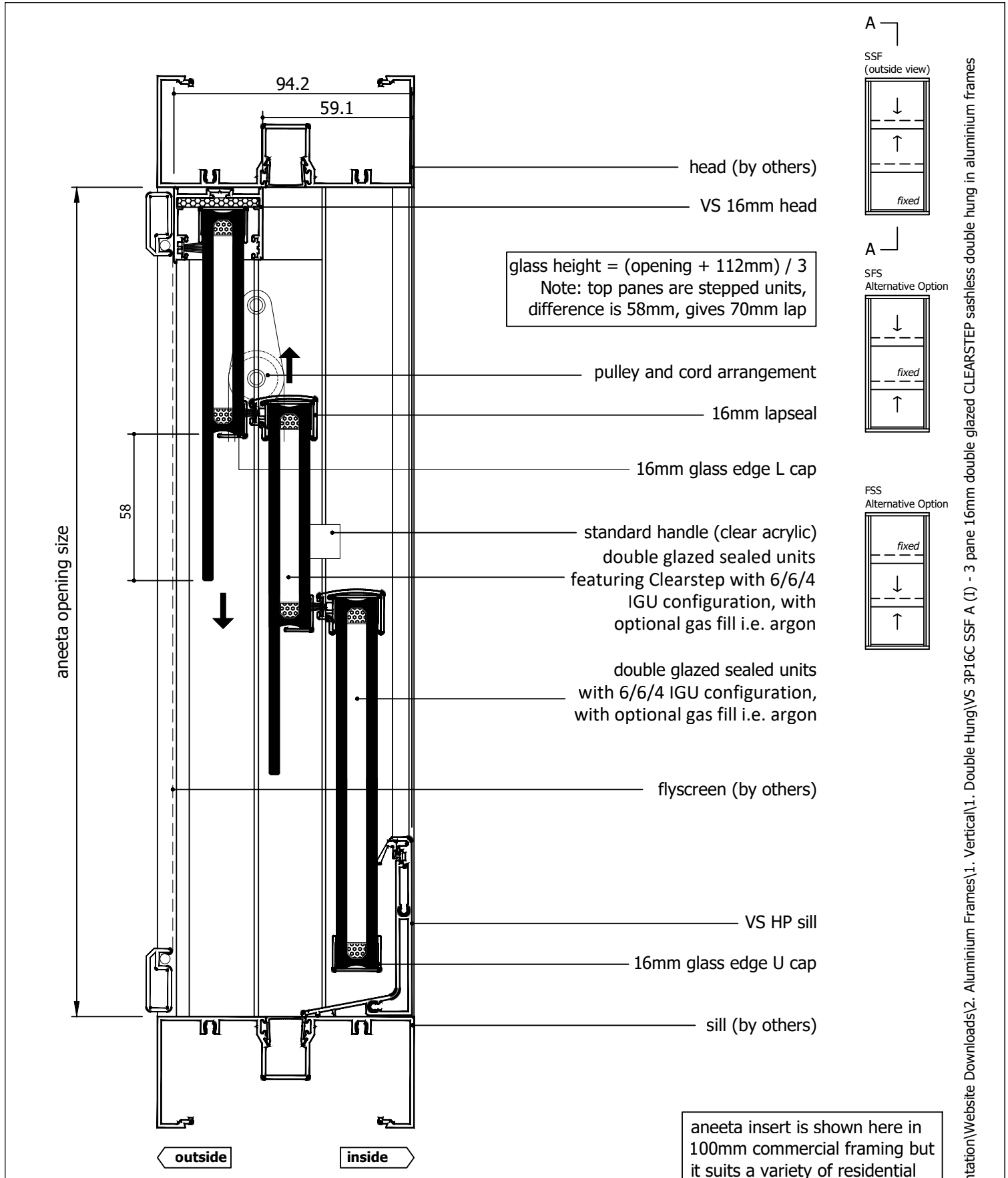
<div>Proprietary and confidential</div> <div>The information contained in this drawing is the sole property of Aneeta Australia. Any reproduction in part or as a whole, without the written permission of Aneeta Australia is prohibited.</div>	Title: 3 pane 16mm double glazed CLEARSTEP sashless double hung in aluminium frames SSF				<div> 949 Stud Road, Rowville VIC 3178, ABN 80 062 883 729</div>	Material: in Aluminium Frame
						Finish:
						Die/Part:
						Dwg No: VS 3P16C SSF A
	Drwn: UF	Chk:	Date: Jan2010	Scale:		Sheet 1 of 5

M:\Documentation\Website Downloads\2. Aluminium Frames\1. Vertical\1. Double Hung\VS 3P16C SSF A (I) - 3 pane 16mm double glazed CLEARSTEP sashless double hung in aluminium frames SSF.dwg

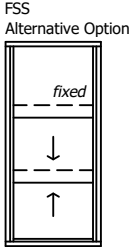
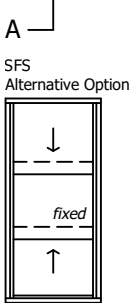
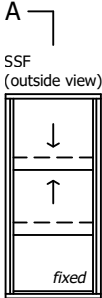


IF IN DOUBT ASK - DO NOT SCALE DRAWING






glass height = (opening + 112mm) / 3
Note: top panes are stepped units,
difference is 58mm, gives 70mm lap

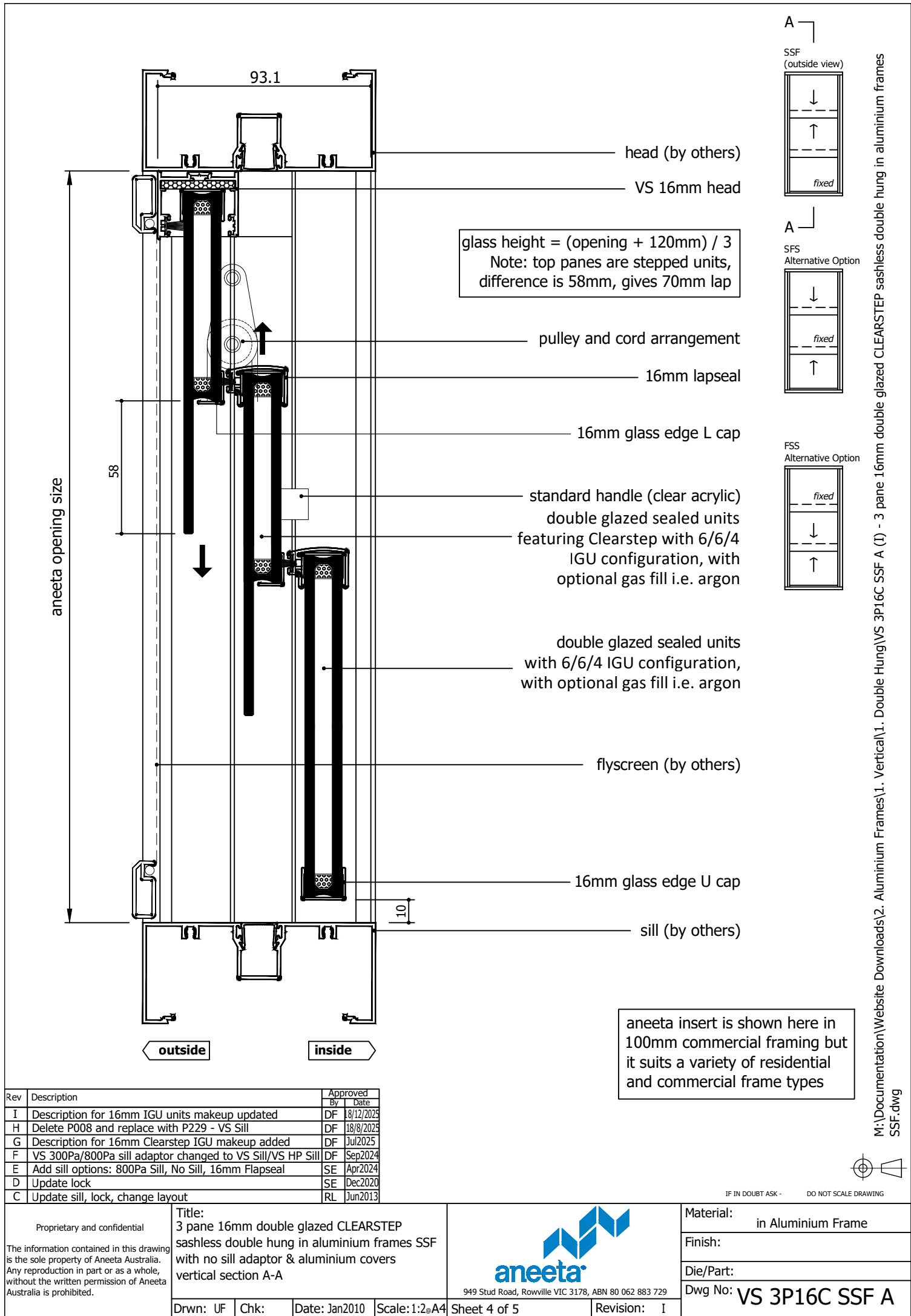


aneeta insert is shown here in
100mm commercial framing but
it suits a variety of residential
and commercial frame types

Rev	Description	Approved By	Date
I	Description for 16mm IGU units makeup updated	DF	18/12/2025
H	Delete P008 and replace with P229 - VS Sill	DF	18/8/2025
G	Description for 16mm Clearstep IGU makeup added	DF	Jul2025
F	VS 300Pa/800Pa sill adaptor changed to VS Sill/VS HP Sill	DF	Sep2024
E	Add sill options: 800Pa Sill, No Sill, 16mm Flapseal	SE	Apr2024
D	Update lock	SE	Dec2020
C	Update sill, lock, change layout	RL	Jun2013

<div>Proprietary and confidential</div> <div>The information contained in this drawing is the sole property of Aneeta Australia. Any reproduction in part or as a whole, without the written permission of Aneeta Australia is prohibited.</div>	Title: 3 pane 16mm double glazed CLEARSTEP sashless double hung in aluminium frames SSF with VS HP sill & aluminium covers vertical section A-A				<div> 949 Stud Road, Rowville VIC 3178, ABN 80 062 883 729</div>	Material: in Aluminium Frame	
						Finish:	
						Die/Part:	
						Dwg No: VS 3P16C SSF A	
Drwn: UF	Chk:	Date: Jan2010	Scale: 1:2@A4	Sheet 3 of 5	Revision: I		

M:\Documentation\Website Downloads\2. Aluminium Frames\1. Vertical\1. Double Hung\VS 3P16C SSF A (1) - 3 pane 16mm double glazed CLEARSTEP sashless double hung in aluminium frames SSF.dwg



glass width = opening - 40mm

aneeta opening size

flyscreen (optional by others)

16mm combination tee

top pane

bottom pane

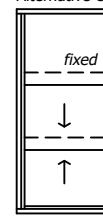
cover

lock

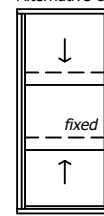
flush filler (by others)

jamb (by others)

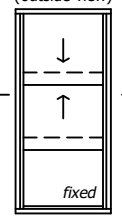
FSS
Alternative Option



SFS
Alternative Option



SSF
(outside view)




outside

inside

aneeta insert is shown here in 100mm commercial framing but it suits a variety of residential and commercial frame types

Rev	Description	Approved By	Date
I	Description for 16mm IGU units makeup updated	DF	18/12/2025
H	Delete P008 and replace with P229 - VS Sill	DF	18/8/2025
G	Description for 16mm Clearstep IGU makeup added	DF	Jul2025
F	VS 300Pa/800Pa sill adaptor changed to VS Sill/VS HP Sill	DF	Sep2024
E	Add sill options: 800Pa Sill, No Sill, 16mm Flapseal	SE	Apr2024
D	Update lock	SE	Dec2020
C	Update sill, lock, change layout	RL	Jun2013

<div>Proprietary and confidential</div> <div>The information contained in this drawing is the sole property of Aneeta Australia. Any reproduction in part or as a whole, without the written permission of Aneeta Australia is prohibited.</div>	Title: 3 pane 16mm double glazed CLEARSTEP sashless double hung in aluminium frames SSF with aluminium covers horizontal section B-B				<div> 949 Stud Road, Rowville VIC 3178, ABN 80 062 883 729</div>	Material: in Aluminium Frame
						Finish:
						Die/Part:
						Dwg No: VS 3P16C SSF A
	Drwn: UF	Chk:	Date: Jan2010	Scale: 1:1@A4		Sheet 5 of 5

M:\Documentation\Website Downloads\2. Aluminium Frames\1. Double Hung\VS 3P16C SSF A (I) - 3 pane 16mm double glazed CLEARSTEP sashless double hung in aluminium frames SSF.dwg